

# CreateIt™

## Software & Labeling Instruction Booklet

### SOFTWARE QUICK START GUIDE (powered by SureThing®)



#### Viewing and Printing the Manual

The complete Maxell CreateIt™ user's guide is installed with this program.

To access the User's Guide, click Start > Programs > Maxell > Maxell CreateIt™ User's Guide.

The User's Guide will be automatically launched in Adobe Acrobat Reader. You can easily print any or all sections of the User's Guide from within Adobe Acrobat Reader.

#### Registration

Be sure to register Maxell CreateIt™ online during the installation or any time you run the program. Registering entitles you to:

- Technical support
- Notification of program updates and upgrades

#### Registering during installation

1. Make sure the register online box is checked.
2. Click Finish and the online registration page will be displayed in your default browser.
3. Complete the form and click Register.

#### Registering from the program

1. Choose Register SureThing® from the Help menu.
2. Click Register Online to display the registration page in your browser.
3. Complete the form and click Register.

#### Where to Find Help

- Maxell CreateIt™ provides help tips in certain areas, such as wizard screens, to help explain more complicated procedures and give helpful hints to make your work with Maxell CreateIt™ more productive.
- The Help menu provides access to many important support features, such as SureThing® Help, Online Tutorials, Popup Help, Tips of the Day as well as Internet support, including News and Special Offers, Program Updates and Support Groups.
- Context-sensitive Help is available in every Maxell CreateIt™ window. Just press F1 or click the Help button!
- Feature-related tutorials take you step-by-step through many of Maxell CreateIt's™ capabilities, including creating a new label, working in the design area, creating text effects and working with playlists.

#### Starting MAXELL CreateIt™

Double-click the Maxell CreateIt™ icon on the desktop, or launch it from the Start menu (look under Programs > Maxell > Maxell CreateIt™).

#### Creating a New Label

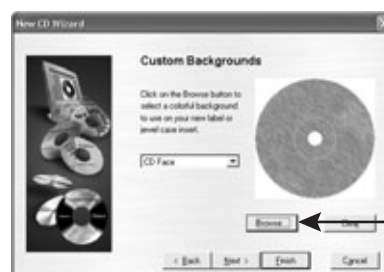
Creating a new label with Maxell CreateIt™ is fast and easy.

1. Click the New button on the Command Bar or choose New from the File menu. The New CD Wizard is launched.



2. On the Select Label Stock screen, select the appropriate Product Type and Label Product you are using.

Click Next.



3. On the Custom Backgrounds Wizard screen, you can click the Browse button if you wish to select a colourful background.

Click Next.

(Use the Browse button to select a colourful background for your label.)

## Creating a New Label Continued...



4. On the SmartDesigns Wizard screen, select whether or not you would like to use Smart Designs via the SmartDesigns check box. Use the Design Variation Bar to select a label layout.

When you are finished click Next.

(The Design Variation Bar lets you scroll through design changes or pop up this menu. The selections are shown on the label.)

### Using the Design Variation Bar

- Click on the > arrow to advance to the next selection. Notice how your design changes.
- Click on the < arrow to move back to the previous selection.
- Click and hold the < or > arrow to scroll through the selections.
- Click on name in the control to pop up a menu with all the available choices.

5. All you need to do now is click on the Finish button!

## Using the Design Bar

The Maxell CreatelT™ Design Bar lets you customize your label quickly and easily.

- ← Pick from a wide variety of pre-designed backgrounds or choose one of your own. Watch as they are applied to your design instantaneously.
- ← Browse through thumbnails of logos, clipart and CD and media symbols or browse for your own pictures.
- ← Make your designs stand out with Text Effects. Wrap text around curves, set it on an angle or an arch, rotate it, etc. Create full-colored text fills, drop shadows, and more.
- ← While we recommend browsing Maxell CreatelT's™ SmartDesign layouts first, you may need to add a text frame from time to time. You can do so with this button.

## Using the Variation Bar



The Variation Bar lets you cycle through the various SmartDesigns available to a particular label stock. You can change the background, layout and font set of the design simply by clicking on the left or right arrows on each bar.


**Background Bar:** The Background Bar allows the user to scroll through various backgrounds installed with Maxell CreatelT™. You can also find these backgrounds by clicking on the background button and choosing the Browse SmartDesign Backgrounds option.


**Layout Bar:** This bar contains the available layouts designed for the chosen background. The layouts are designed with music CD's and other general purpose setups in mind.

**Font Bar:** Fonts are an excellent way to change the feeling of any design. Maxell CreatelT™ SmartDesigns are configured with several font variations to fit the kind of design you are working on. Simply click on the left or right arrow buttons on the bar to choose between font variables.

## Object Mode and Text Mode

An important thing to remember in Maxell CreatelT™ is that there are two modes. Object Mode and Text Mode. To switch between modes simply click on the corresponding button located at the top left corner of your screen.

 The I-Beam is the icon to choose if you wish to be in Text Mode. When you are in Text Mode you can click inside any text-frame to edit the text within it.

 Click on the Pointer Tool button to get into Object Mode. Object Mode allows you to move boxes, change their sizes and edit their properties by double-clicking on them.

## Printing in Maxell CreatelT™

The print dialogue box has several important features intended to make printing as comprehensive as possible. Here are a few of the most important features of the print dialogue box.



**Number of Labels to print :** Printing multiple copies of your label design is simple! Just enter how many copies you'd like to print here. You may also choose to print a whole sheet or sheets of labels by checking the "Based on label sheets" box. Changing the number of labels or sheets will change the value for the "Sheets Required" notation under the template preview box.

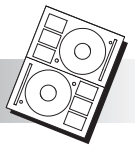
**Select Starting Label Preview:** If you have paper that has been partially used, select the label you would like Maxell CreatelT™ to begin printing on by clicking on it in the preview. The label you have chosen will turn blue. If you are printing more than one label, the labels after the one selected will also turn blue.

**Advanced Options:** This dialogue box is where you find the crop marks, print to file and clip to label features. The crop marks feature is especially helpful if you are printing to non-perforated card stock.

**Change Stock:** If the template you see in the starting label preview box is not the same as the paper you will be printing to, click on this button to select the template that matches your paper.

**Calibrating your Printer:** Because each printer is full of working parts, the precision in each is slightly different. Sometimes this may cause SureThing to slightly miss the mark when printing. If this happens, you need to calibrate your printer. (Please reference the calibration data in the User's Guide which is installed on the CreatelT™ software disc enclosed.)

## STANDARD CD/DVD LABELS (Matte or Glossy Sheets)



1 After printing your label, tear the full sheet in half along the perforation line. Flip the label sheet over so the printed side is face down.



2 Using the pull-tab, peel and remove the backing sheet from your label. The 2 tab holes and the centre disc hole should pop out during this process.



3 Place the label sheet printed side down onto the applicator, using the tab pins for proper alignment.



4 Close the applicator lid over your CD/DVD label.



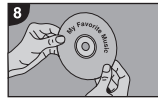
5 Place your CD/DVD onto the applicator, using the centre guide to help align your disc. Holding your CD/DVD along the outside edge will ensure your disc will not be damaged.



6 Apply downward pressure to your disc, securing it to your label. Take care not to scratch the written surface of your CD/DVD disc.

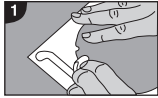


7 Leaving the applicator closed, lift and remove the disc by inserting finger into the finger notch (from above or below) and pulling the labeled CD/DVD up and away from the backing sheet.

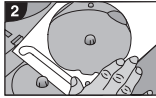


8 Store the finished disc in a jewel case or storage device.

## JEWEL CASE SPINE LABELS



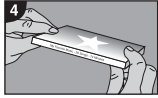
1 After printing and applying your CD/DVD label, peel and remove the backing to the spine label from the remaining label sheet.



2 Place the label sheet printed side down onto the applicator face down. Close the applicator lid over the label sheet.



3 Insert the desired end of your jewel case into the spine label slot of the applicator. Press down firmly to apply label.



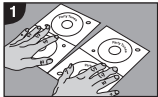
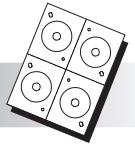
4 Lift and remove the jewel case from the applicator to finish the application.

## KEY RECOMMENDATIONS

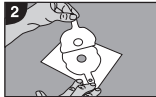
**Re-Using Standard CD/DVD label sheets (Matte or Glossy):** After printing on your 1/2 sheet, do not attempt to re-print the sheet once any labels have been removed.

**Printing Glossy Labels:** To avoid ink smudges, allow a 90 second drying time before handling the printed label surface.

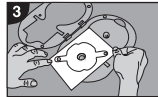
## MINI CD LABELS (3" / 8 cm)



1 After printing your label(s), tear the full sheet into 4 pieces along the perforation lines. Flip your label sheet section over so the printed side is face down.



2 Using the pull-tab, peel and remove the backing sheet from your label. The 2 tab holes and the centre disc hole should pop out during this process.



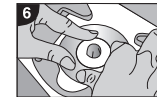
3 Place the label sheet printed side down onto the applicator, using the tab pins for proper alignment.



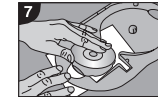
4 Close the applicator lid over your Mini CD label.



5 Place your Mini CD onto the applicator, using the centre guide to help align your disc. Holding your Mini CD along the outside edge will ensure your disc will not be damaged.



6 Apply downward pressure to your disc, securing it to your label. Take care not to scratch the written surface of your Mini CD.

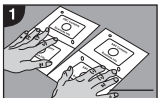
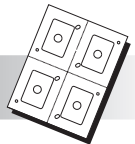


7 Leaving the applicator closed, lift and remove the disc by inserting finger into the finger notch (from above or below) and pulling the labeled Mini CD up and away from the backing sheet.

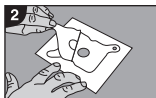


8 Store the finished disc in a jewel case or storage device.

## eBUSINESS DISC LABELS



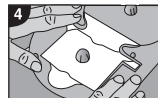
1 After printing your label(s), tear the full sheet into 4 pieces along the perforation lines. Flip your label sheet section over so the printed side is face down.



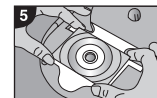
2 Using the pull-tab, peel and remove the backing sheet from your label. The 2 tab holes and the centre disc hole should pop out during this process.



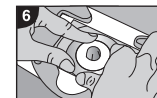
3 Place the label sheet printed side down onto the applicator, using the tab pins for proper alignment.



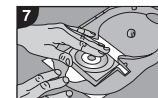
4 Close the applicator lid over your eBusiness disc label.



5 Place your eBusiness disc onto the applicator, using the centre guide to help align your disc. Holding your eBusiness disc along the outside edge will ensure your disc will not be damaged.



6 Apply downward pressure to your disc, securing it to your label. Take care not to scratch the written surface of your eBusiness Disc.

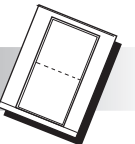


7 Leaving the applicator closed, lift and remove the disc by inserting finger into the finger notch (from above or below) and pulling the labeled eBusiness Disc up and away from the backing sheet.



8 Store the finished disc in a jewel case or storage device.

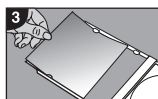
## JEWEL CASE SONG BOOKLET



1 After printing your jewel case song booklet, remove the booklet by tearing along the outside perforations.



2 Fold your song booklet in half along the centre score line. The booklet should now have the cover facing up with the fold on the left.

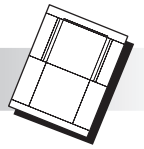


3 With your jewel case open, slide the song booklet face down under the jewel case lid tabs.



4 Close your jewel case and inspect your printed song booklet. Make any necessary adjustments by repeating the previous steps.

# JEWEL CASE INSERTS



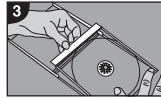
## STANDARD JEWEL CASE BACK W/SPINE INSERTS & STANDARD FRONT INSERT



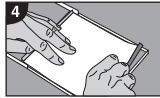
1 After printing your Front Insert for your slimline jewel case, remove the insert by tearing along the outside perforations.



2 Flip the sheet over so the printed side is face down. Fold the Spine flaps up at a 90 degree angle along the score lines.



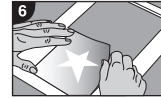
3 Remove the disc tray your standard jewel case by carefully lifting it out of the locking tabs.



4 Place your folded insert into the bottom of your jewel case.



5 Replace the disc tray into your jewel case. Locking one end at a time will help keep the spine flaps in place.



6 If you have printed a standard front insert remove it by tearing along the perforations.

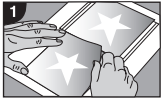


7 With your jewel case open, slide the front insert face down under the jewel case lid tabs.

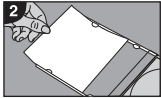


8 Close your standard jewel case and inspect your printed inserts. Make any necessary adjustments by repeating the appropriate steps.

## SLIMLINE JEWEL CASE FRONT INSERT(S)



1 After printing your Front Insert for your slimline jewel case, remove the insert by tearing along the outside perforations.



2 With your jewel case open, slide the front insert face down under the jewel case lid tabs.



3 Close your slimline jewel case and inspect your printed insert. Make any necessary adjustments by repeating the previous steps.



4 To use the second Front Insert for your jewel case, remove the insert by tearing along the inside perforations. Be sure to tear at the extended top edge (A). Repeat steps 2 and 3 to finish.

# maxell LABELING PRODUCTS

## CD/DVD Label Kit

LK-1

## Multi-Purpose Kit for ALL Disc Sizes **PLUS**

LK-2



Kit Includes:

- Multi -Purpose Exact Fit Applicator
- Software powered by SureThing SE Edition
- Matte White Labels (10 sheets including 2 CD/DVD, 2 spine, 6 multi-purpose labels per sheet)
- Glossy White Labels (1 sheet including CD/DVD, 2 spine, 6 multi-purpose labels per sheet)
- Matte Jewel Case Inserts (5 Standard Inserts or 1 Slimline Inserts)
- Matte Jewel Case Song Booklets (6 sheets including 1 booklet per sheet)



Kit Includes:

- Multi -Purpose Exact Fit Applicator
- Software powered by SureThing SE Edition
- Matte White Labels (12 sheets including 2 CD/DVD, 2 spine, 6 multi-purpose labels per sheet)
- Glossy White Labels (6 sheets including 2 CD/DVD, 2 spine, 6 multi-purpose labels per sheet)
- Matte Jewel Case Inserts (6 Standard Inserts or 12 Slimline Inserts)
- eBusiness Labels (4 sheets including 4 labels per sheet)
- Mini CD Labels (3 sheets including 4 labels per sheet)



LK-3

CD/DVD MATTE White Refill Pack  
25 Sheets (50 disc labels, 50 spine labels, 150 multi-purpose labels)



LK-4

CD/DVD GLOSSY White Refill Pack  
25 Sheets (50 disc labels, 50 spine labels, 150 multi-purpose labels)



LK-5

Jewel Case Inserts Matte Refill Pack  
25 Jewel Case Sheets (25 Standard Inserts or 50 Slim Inserts)  
5 Song Booklet Sheets (5 Standard Booklets or 10 Slim Booklets)



LK-6

Mini CD MATTE Labels Refill Pack  
30 Sheets (120 Mini CD Labels)



LK-7

CD/DVD MATTE White Value Pack  
50 Sheets (100 disc labels, 100 spine labels, 300 multi-purpose labels)

## GETTING HELP!

Visit our website [www.maxell.com](http://www.maxell.com) and click "FAQs" for answers to frequently asked questions.

For Technical Support, call 800-377-5887 or e-mail us at: [techsupp@maxell.com](mailto:techsupp@maxell.com)

For further technical assistance, visit the SureThing® website at [www.surething.com](http://www.surething.com)

### 90-Day Limited Warranty

Maxell warrants this product to be free from manufacturing defects in materials and workmanship for a period of 90 days from the date of original purchase.

Any product found to be defective will be replaced at no charge, during the warranty period, if it is returned with proof of purchase to: Maxell Corporation of America, P.O. Box 900, Fair Lawn, NJ 07410-0900.

Manufacturer, distributor and seller shall not be liable for consequential commercial damages. Some states do not allow a limitation with respect to consequential damages. This warranty gives you specific legal rights, and you may have other rights which vary from state to state.

\*All trademarks are property of their respective holders.

**maxell**   
[www.maxell.com](http://www.maxell.com)